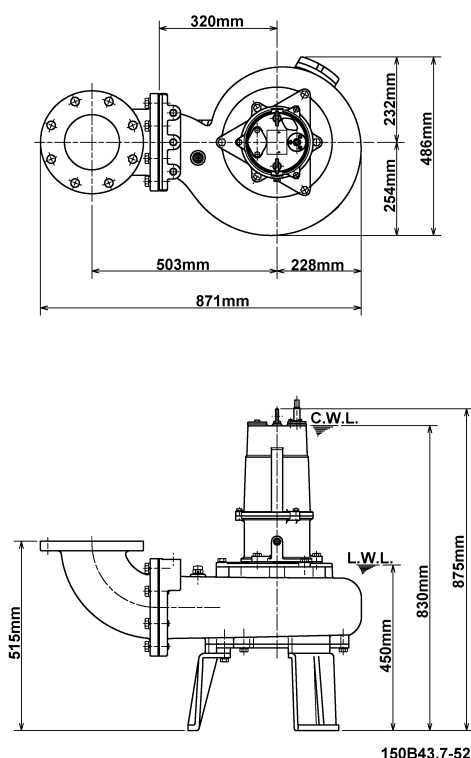
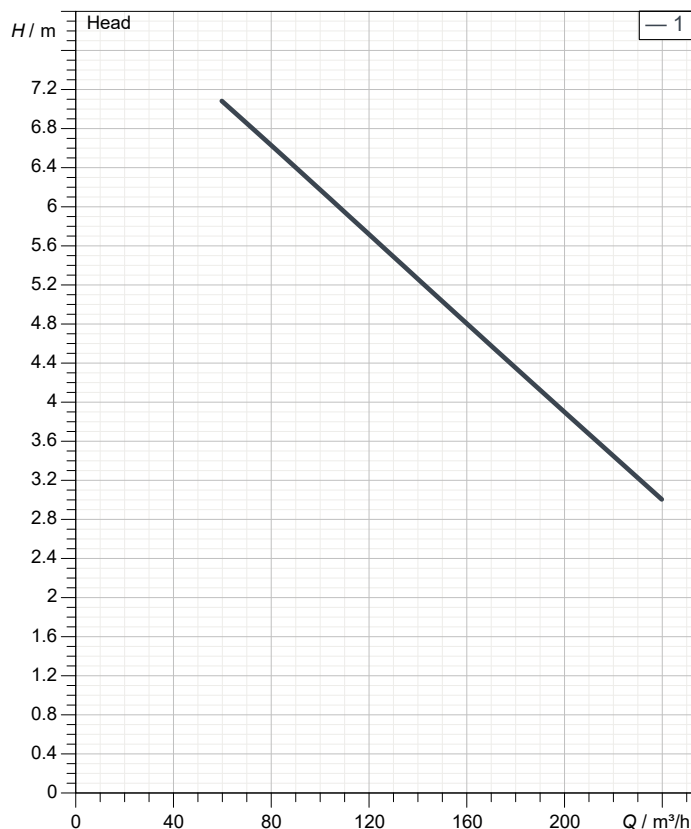


# Data sheet 150B43.7-52



CWL: Continuous running water level  
LWL: Lowest running water level



## Specification

Electric submersible pump B-series  
Degree of protection IP 68  
Pressure resistance max. 15 m  
Type of impeller single channel impeller  
Free passage 53 mm  
Suitable for:  
sewage water

## Electric motor

Dry-type submersible induction motor  
Insulation class F 4Poles 1410 1/min  
Starting mode Direct starting  
Rated voltage 400 V 50 Hz 3~  
Power uptake 4.59 kW  
Rated power 3.70 kW  
Rated current 7.9 A  
Start current 49.0 A

## Cable

10m NSSHÖU 4Cx1,5mm²

## Motor Protection

Circle thermal protector  
(snap-action bi-metal device)

## Shaft seal

Double inside mechanical seal in oil bath  
additional lubrication by oil lifting device  
Primary seal  
Silicon carbide on silicon carbide  
Secondary seal  
Ceramic on carbon

## Bearings

Shielded ball bearings, maintenance-free

## Materials

Impeller  
FC200 (EN-GJL-200)  
Pump casing FC200 (EN-GJL-200)  
Suction cover FC200 (EN-GJL-200)  
Motor Frame FC200 (EN-GJL-200)  
Shaft SUS420J2 (EN-X30Cr13)

## Discharge size

150mm JIS10K flange  
guide rail fitting optional

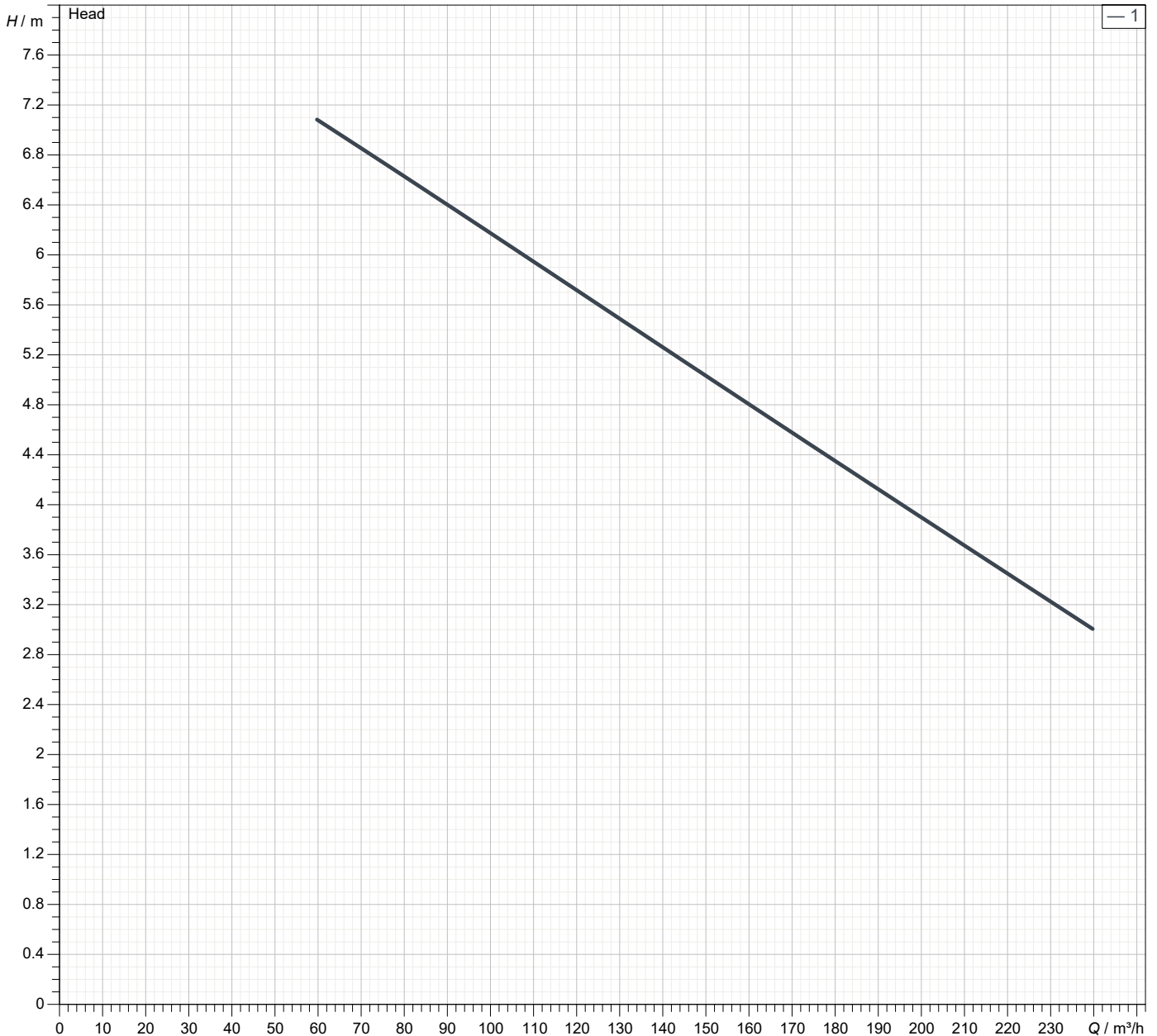
## Weight

145 kg (dry weight of the pump only without cable)

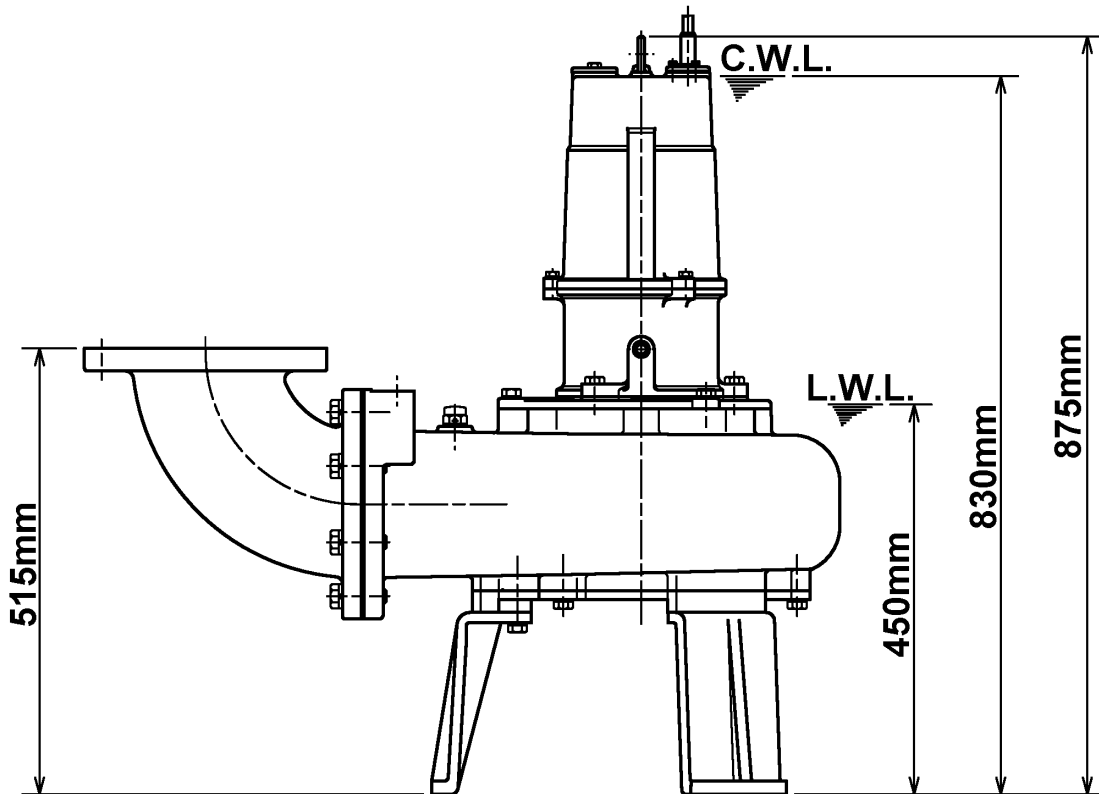
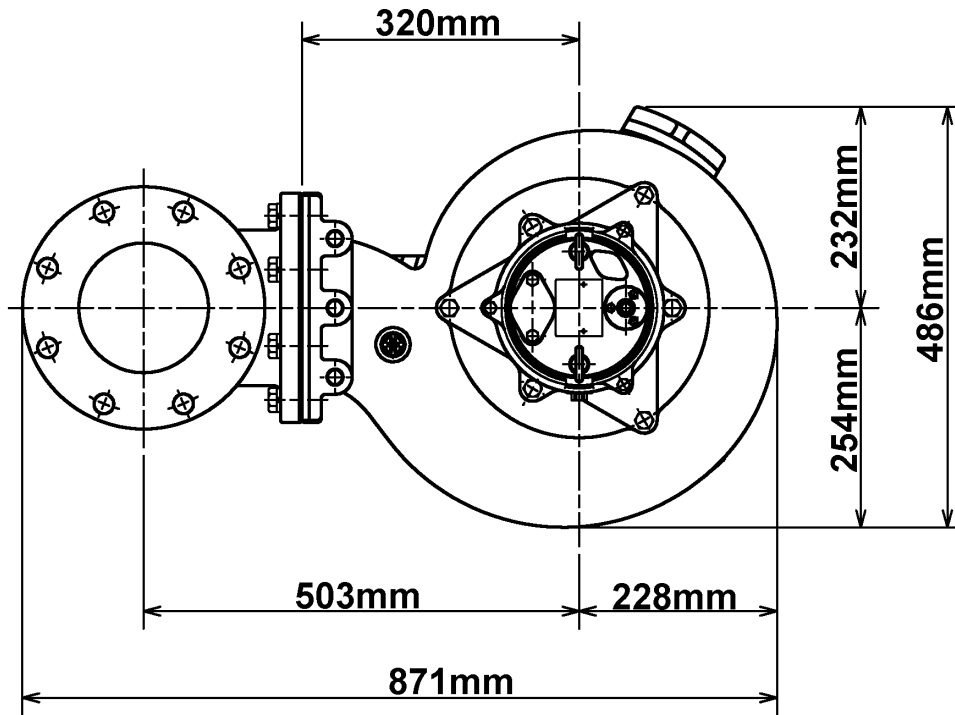
# Performance curve

## 150B43.7-52

Discharge port	6"
Head	7.1 m
Flow	239.8 m <sup>3</sup> /h
Rated power	3.70 kW
Power input	4.59 kW
Phases	3~
Voltages	400 V
Frequency	50 Hz
Rated current	7.9 A
Starting current	48.98 A
Number of poles	4
Speed	1410 1/min
Starting mode	Direct starting
Insulation class	F



# Dimensions 150B43.7-52



150B43.7-52

CWL: Continuous running water level  
LWL: Lowest running water level

 **TSURUMI PUMP**

Tsurumi (Europe) GmbH

2025-03-03

V.01.02.2025

Wahlerstr. 10 \* 40472 Düsseldorf \* Germany

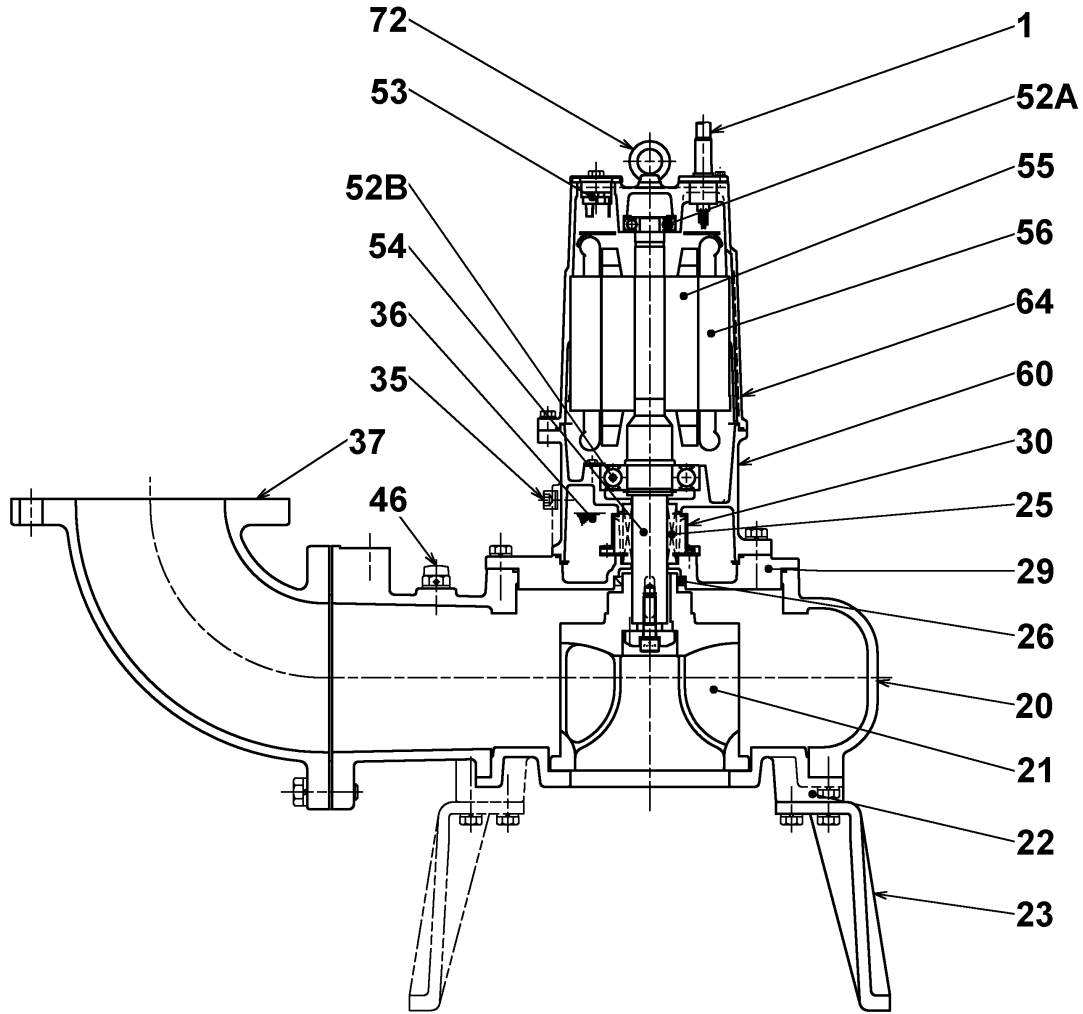
Tel.: +49-211-4179373

Fax: +49-211-417937-480

sales@tsurumi.eu

www.tsurumi.eu

# Sectional drawing 150B43.7-52



**150B43.7-52**

No.	Description	Remark		No.	Description	Remark
1	Cable	NSSHÖU		53	Motor Protector 380/400/415V-50Hz.KA314-HRXL00 (H.C)	
20	Pump casing	FC200 (EN-GJL-200)		54	Shaft	SUS420J2 (EN-X30Cr13)
21	Impeller	FC200 (EN-GJL-200)		55	Rotor	.
22	Suction cover	FC200 (EN-GJL-200)		56	Stator	.
23	Stand support (3x)	Construction steel SS400		60	Bearing Housing	FC200 (EN-GJL-200)
25	Mechanical seal	H-35A		64	Motor Frame	FC200 (EN-GJL-200)
26	Oil seal	TC557209		72	Eye screw (2x)	SUS304 (EN-X5CrNi18-10)
30	Oil distributor	Plastic				
35	Oil screw	SUS304 (EN-X5CrNi18-10)				
36	Lubricant	Turbine oil (ISO VG32)				
37	Discharge bend	FC200 (EN-GJL-200)				
46	Air vent screw	Nylon				
48	Screwed Flange	FC200 (EN-GJL-200)				
50	Motor cover	FC200 (EN-GJL-200)				
52A	Upper bearing	6304ZZC3				
52B	Lower bearing	6309ZZC3				