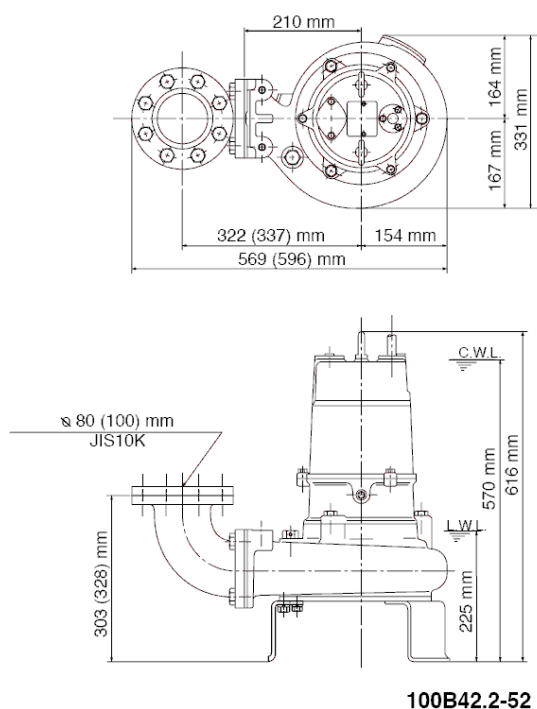
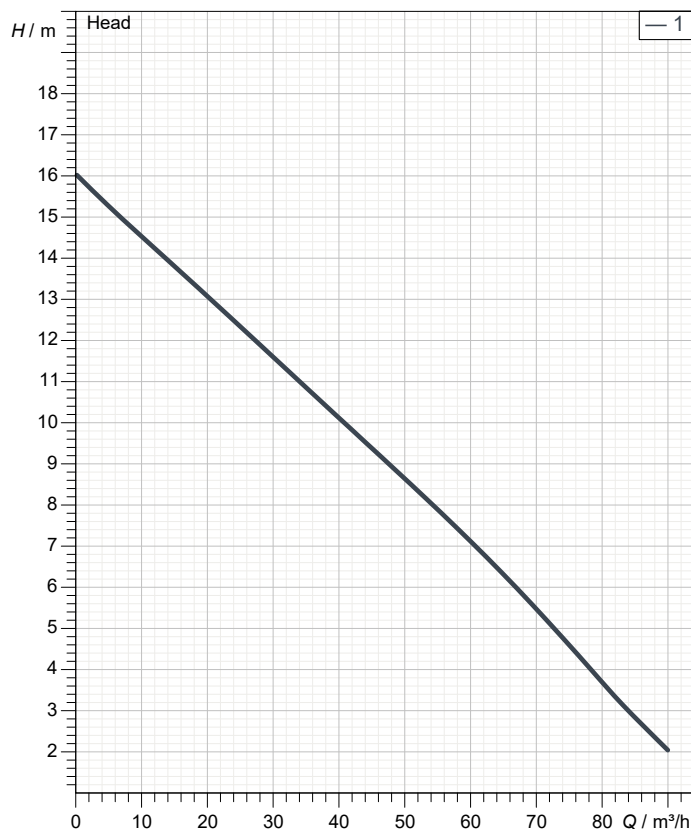


# Data sheet 100B42.2-52



100B42.2-52

CWL: Continuous running water level  
LWL: Lowest running water level



## Specification

Electric submersible pump B-series  
Degree of protection IP 68  
Pressure resistance max. 15 m  
Type of impeller single channel impeller  
Free passage 45 mm  
Suitable for:  
sewage water

## Electric motor

Dry-type submersible induction motor  
Insulation class E 4 Poles 1420 1/min  
Starting mode Direct starting  
Rated voltage 400 V 50 Hz 3~  
Power uptake 2.85 kW  
Rated power 2.20 kW  
Rated current 5 A  
Start current 32.0 A

## Cable

10m NSSHÖU 4Cx1,5mm<sup>2</sup>

## Motor Protection

Circle thermal protector  
(snap-action bi-metal device)

## Shaft seal

Double inside mechanical seal in oil bath  
additional lubrication by oil lifting device  
Primary seal  
Silicon carbide on silicon carbide  
Secondary seal  
Ceramic on carbon

## Bearings

Shielded ball bearings, maintenance-free

## Materials

Impeller  
FC200 (EN-GJL-200)  
Pump casing  
FC200 (EN-GJL-200)  
Suction cover  
FC200 (EN-GJL-200)  
Motor Frame  
FC200 (EN-GJL-200)  
Shaft  
SUS420J2 (EN-X30Cr13)

## Discharge size

4" (100mm) JIS 10K screwed-in mating flange  
guide rail fitting optional

## Weight

70 kg (dry weight of the pump only without cable)

# Performance curve

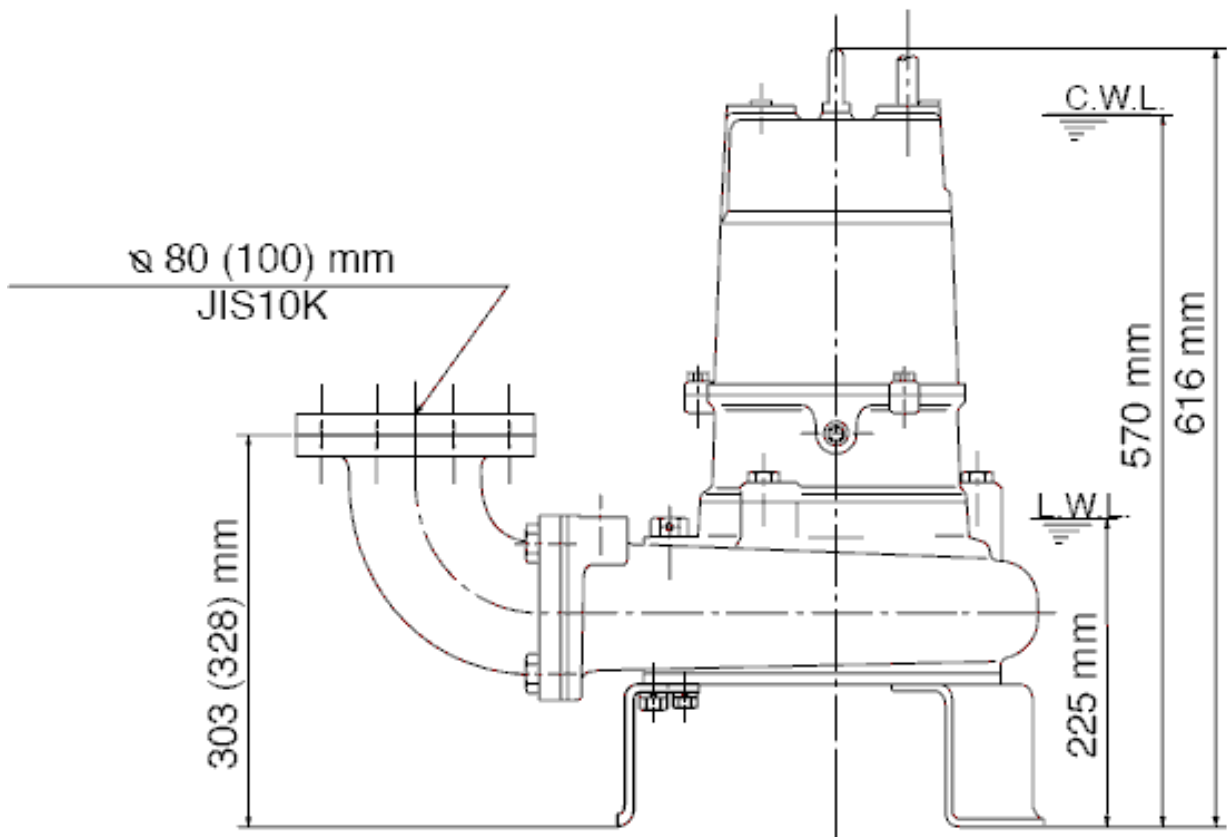
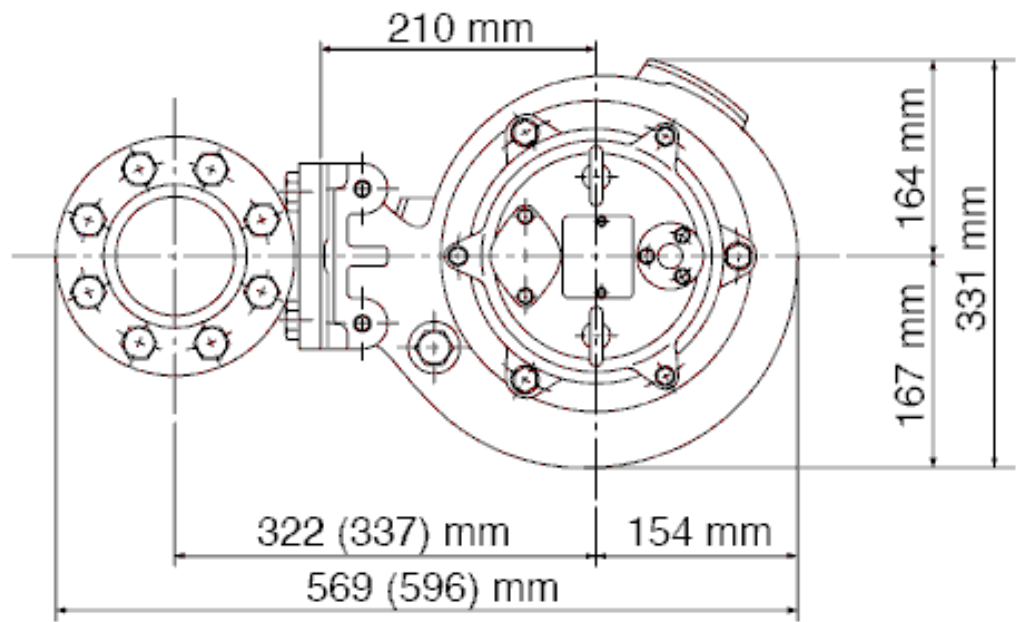
## 100B42.2-52

Discharge port	4"
Head	16.0 m
Flow	90.0 m <sup>3</sup> /h
Rated power	2.20 kW
Power input	2.85 kW
Phases	3~
Voltages	400 V
Frequency	50 Hz
Rated current	5 A
Starting current	32.00 A
Number of poles	4
Speed	1420 1/min
Starting mode	Direct starting
Insulation class	E



# Dimensions

## 100B42.2-52



**100B42.2-52**

CWL: Continuous running water level  
LWL: Lowest running water level



Tsurumi (Europe) GmbH

2025-03-03

V.01.02.2025

Wahlerstr. 10 \* 40472 Düsseldorf \* Germany

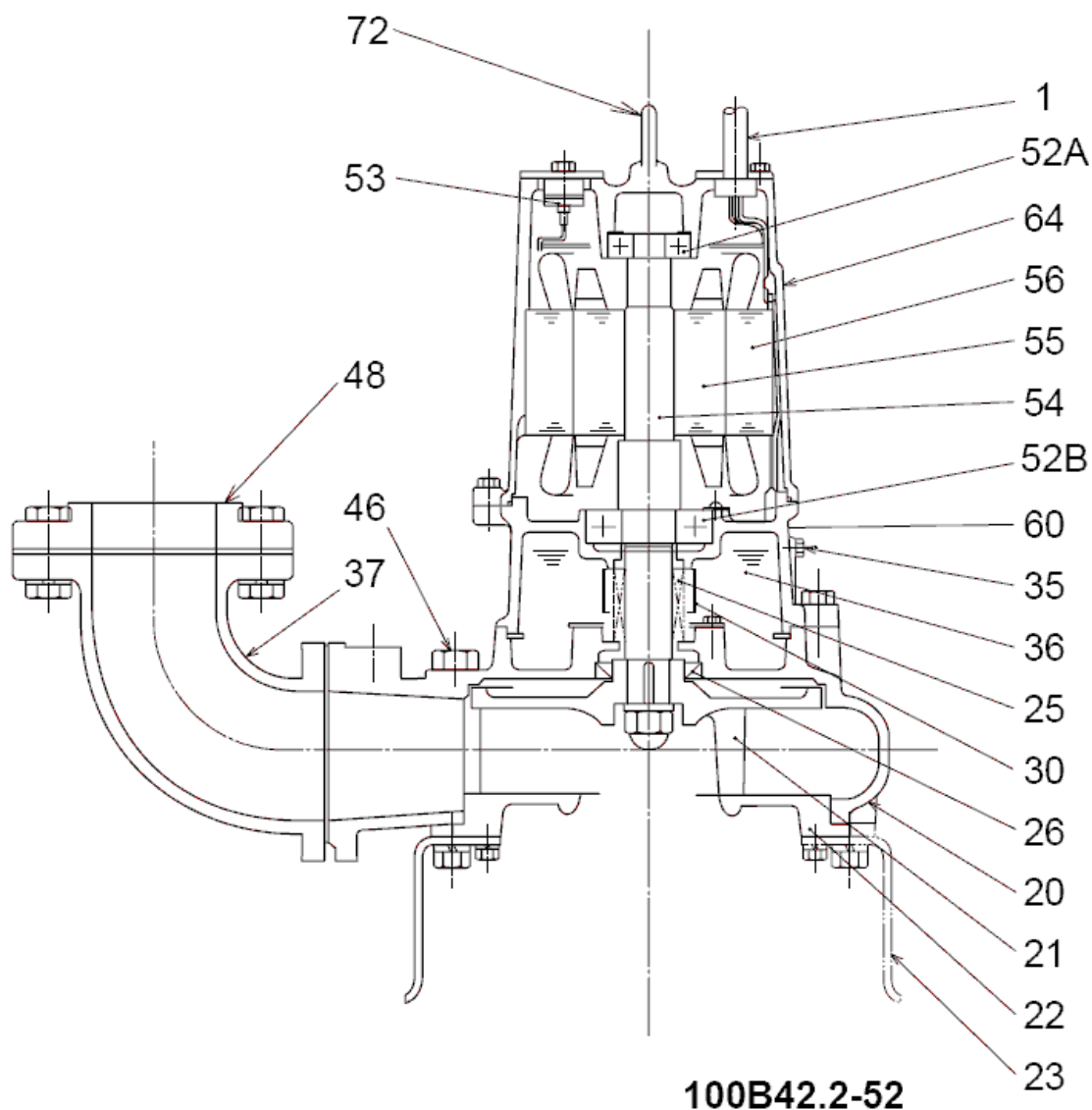
Tel.: +49-211-4179373

Fax: +49-211-417937-480

sales@tsurumi.eu

www.tsurumi.eu

# Sectional drawing 100B42.2-52



No.	Description	Remark	No.	Description	Remark
1	Cable	NSSHÖU	54	Shaft	SUS420J2 (EN-X30Cr13)
20	Pump casing	FC200 (EN-GJL-200)	55	Rotor	.
21	Impeller	FC200 (EN-GJL-200)	56	Stator	.
22	Suction cover	FC200 (EN-GJL-200)	60	Bearing Housing	FC200 (EN-GJL-200)
23	Stand support (3x)	Construction steel SS400	64	Motor Frame	FC200 (EN-GJL-200)
25	Mechanical seal	H-30A	72	Eye screw (2x)	SUS304 (EN-X5CrNi18-10)
26	Oil seal	TC456812			
30	Oil distributor	Plastic			
35	Oil screw	SUS304 (EN-X5CrNi18-10)			
36	Lubricant	Turbine oil (ISO VG32)			
37	Discharge bend	FC200 (EN-GJL-200)			
46	Air vent screw	Nylon			
48	Screwed Flange	FC200 (EN-GJL-200)			
52A	Upper bearing	6304ZZC3			
52B	Lower bearing	6307ZZC3			
53	Motor Protector 380/400/415V-50Hz	KA314-HRXL00 (H.C)			